



Australian Tarantula

CARE GUIDE



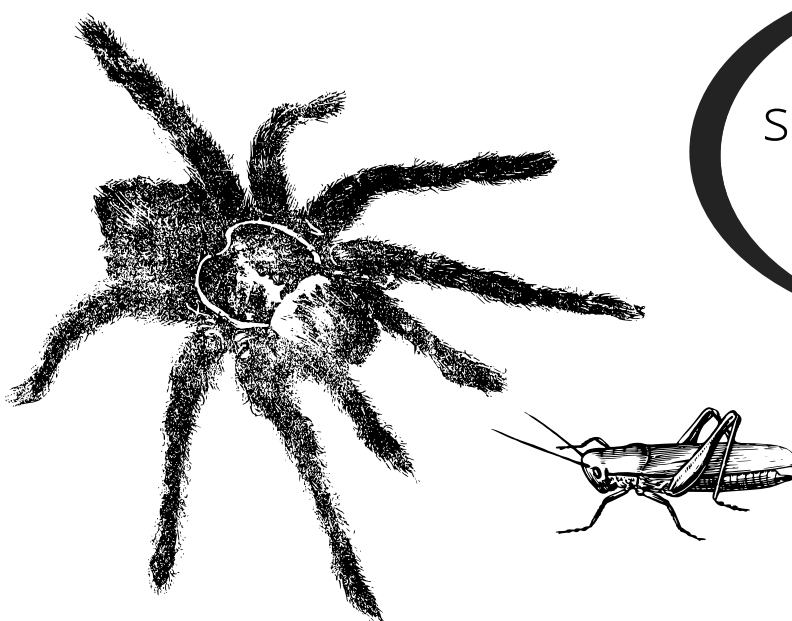
Temperature: 16-28C
Humidity: 60-70%



Food: Feed appropriate sized crickets 1-2 times a week. Remove uneaten food after 12 hours.



Tarantulas like to burrow. They will need a mix of cocopeat, vermiculite and clay - slightly moist, not wet. There should be enough substrate for the tarantula to create a burrow. A starter hole can be provided when housing for the first time. Make sure that there is no more than 10cm of air space from the top of the enclosure to prevent injury should the tarantula climb up and fall. Ventilation holes are not required - moisture levels should be kept at a constant and too much ventilation will cause the substrate to dry out and the tarantula to dehydrate.



The cricket should be about 1/3 of spider's body size